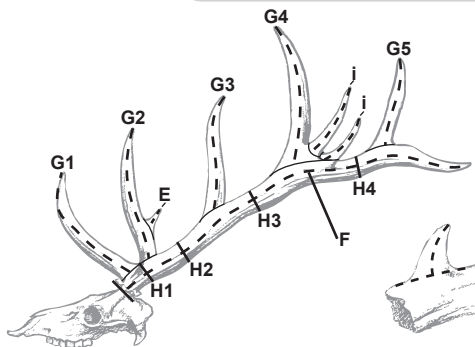


BOONE AND CROCKETT CLUB®

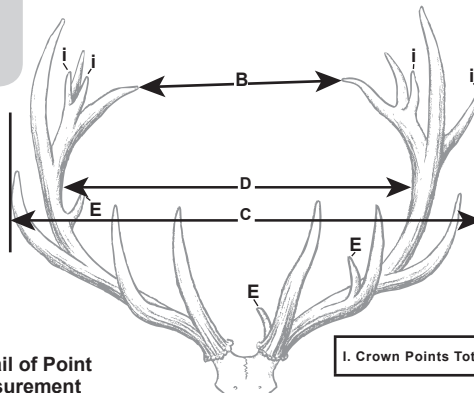
OFFICIAL SCORING SYSTEM FOR NORTH AMERICAN BIG GAME TROPHIES

ROOSEVELT'S AND TULE ELK

(CHECK ONE):	MINIMUM SCORES	AWARDS	ALL-TIME
<input type="checkbox"/> Roosevelt's	275	290	
<input type="checkbox"/> Tule	270	285	



Detail of Point Measurement



CROWN POINTS	
Right Antler	Left Antler
I. Crown Points Total	
ABNORMAL POINTS	
Right Antler	Left Antler

SEE OTHER SIDE FOR SCORING INSTRUCTIONS

BELOW DATA (A, B, & C) DO NOT CALCULATE IN THE FINAL SCORE BUT ARE REQUIRED

A. No. Points on Right Antler		No. Points on Left Antler					
B. Tip to Tip Spread		C. Greatest Spread					
				TOTAL TO E			
D. Inside Spread of Main Beams		SPREAD CREDIT (May Equal But Not Exceed Longer MAIN BEAM)		Column 1	Column 2	Column 3	
				Right Antler	Left Antler	Difference	
E. Total of Lengths of Abnormal Points							
F. Length of Main Beam							
G-1. Length of First Point							
G-2. Length of Second Point							
G-3. Length of Third Point							
G-4. Length of Fourth Point							
G-5. Length of Fifth Point							
G-6. Length of Sixth Point, If Present							
G-7. Length of Seventh Point, If Present							
H-1. Circumference at Smallest Place Between First and Second Points							
H-2. Circumference at Smallest Place Between Second and Third Points							
H-3. Circumference at Smallest Place Between Third and Fourth Points							
H-4. Circumference at Smallest Place Between Fourth and Fifth Points							
TOTALS							
ADD TOGETHER:	Spread Credit		Exact Locality Where Killed:*	County:	State/Prov:		
	Column 1		Hunter (Legal Name):		Date Killed:		
	Column 2		Trophy Owner (Legal Name):		Telephone #:		
	Total of I		Trophy Owner's Address:				
Subtotal			Trophy Owner's Email:		Guide's Name:		
SUBTRACT:	Column 3		Remarks (Mention Any Abnormalities or Unique Qualities):				
FINAL SCORE							

*Geographic location (lake, mountain, river, etc.) required for trophies taken in Canada and Alaska.

Boone and Crockett Club® Official Measurer I.D. Number

Mail To: Boone and Crockett Club ■ 250 Station Drive, Missoula, MT 59801 ■ (406) 542-1888 ■ www.booneandcrockettclub.com

No part of this scoring system may be altered in any way. No part of this score chart may be altered or copied without express written permission from the Boone and Crockett Club. A score chart is not authenticated until signed and dated by a certified Boone and Crockett Club Official Measurer. No scores are official Boone and Crockett scores until verified and the trophy is accepted by the Boone and Crockett Club. All trophy entries into the Boone and Crockett Club's Awards Programs are subject to verification.

COPYRIGHT © 2015 BY BOONE AND CROCKETT CLUB®

3-15-1K

I, _____, certify that I have measured this trophy on _____
PRINT NAME MM/DD/YYYY

at _____
STREET ADDRESS CITY STATE/PROVINCE

and that these measurements and data are, to the best of my knowledge and belief, made in accordance with the instructions given.

Witness: _____ Signature: _____ B&C I.D. Number

--	--	--	--

B&C OFFICIAL MEASURER

BOONE AND CROCKETT CLUB® INSTRUCTIONS FOR MEASURING ROOSEVELT'S AND TULE ELK

All measurements must be made with a 1/4-inch wide flexible steel tape to the nearest one-eighth of an inch. (Note: A flexible steel cable can be used to measure points and main beams only.) Enter fractional figures in eighths, without reduction. Official measurements cannot be taken until the antlers have air dried at a habitable room temperature for at least 60 days after the animal was killed. The 60-day drying period for a trophy that has been frozen or boiled begins the day it is removed from the freezer, boiling pot, or submersion in any liquid.

- A. Number of Points on Each Antler:** to be counted a point, the projection must be at least one inch long, with length exceeding width at one inch or more of length. All points are measured from tip of point to nearest edge of beam as illustrated. Beam tip is counted as a point but not measured as a point. **Point totals do not add into the final score.**
- B. Tip to Tip Spread** is measured between tips of main beams. **Tip to tip spread does not add into the final score.**
- C. Greatest Spread** is measured between perpendiculars at a right angle to the center line of the skull at widest part, whether across main beams or points. **Greatest spread does not add into the final score.**
- D. Inside Spread of Main Beams** is measured at a right angle to the center line of the skull at widest point between main beams. Enter this measurement again as the Spread Credit if it is less than or equal to the length of the longer main beam; if greater, enter longer main beam length for Spread Credit.
- E. Total of Lengths of all Abnormal Points:** Abnormal Points are those non-typical in location or pattern occurring below G-4. Measure in usual manner and record in appropriate blanks. Note: do not confuse with Crown Points that may occur in the vicinity of G-4, G-5, G-6, etc.
- F. Length of Main Beam** is measured from the center of the lowest outside edge of burr over the outer side to the most distant point of the main beam. The point of beginning is that point on the burr where the center line along the outer side of the beam intersects the burr, then following generally the line of the illustration.
- G-1. Length of Normal Points:** The length of G-1 is then measured from the tip, over the curve, to the center of this point on the outer side. It is not taken over the curve to the burr.
- G-2-3-4-5-6-7. Length of Normal Points:** Normal points project from the top or front of the main beam in the general pattern illustrated. They are measured from nearest edge of main beam over outer curve to tip. Lay the tape along the outer curve of the beam so that the top edge of the tape coincides with the top edge of the beam on both sides of point to determine the baseline for point measurement. Record point lengths in appropriate blanks.
- H-1-2-3-4. Circumferences** are taken as detailed in illustration for each measurement.
- I. Crown Points:** From the well-defined Royal on out to end of beam, all points other than the normal points in their typical locations are Crown Points. This includes points occurring on the Royal, on other normal points, on Crown Points, and on the bottom and sides of main beam after the Royal. Measure and record in appropriate blanks provided and add to score below.

BOONE AND CROCKETT CLUB® MATERIALS RELEASE FORM FOR ALL NON-HUNTER-TAKEN TROPHIES

I certify by my signature that the information I have provided on this form is accurate and correct. I also understand that all my entry materials, including photographs, as well as any additional photographs taken by Boone and Crockett (our representatives or agents) during Awards Programs or Judges Panels, or likenesses rendered from these photographs become the property of the Boone and Crockett Club and may be used to promote the Club, and its records-keeping activities.

Date: _____ Signature of Trophy Owner: _____

ENTRY REQUIREMENTS FOR BOONE AND CROCKETT TROPHIES

- ☐ **Current original score chart, signed and dated by the Official Measurer.**
- ☐ **\$40 Entry Fee.** The entry fee, which is nonrefundable, is payable in cash, personal check, money order, credit card, etc.,. It is waived for government fish and wildlife agencies, Official Measurers, museums, educational institutions, etc.
- ☐ **Clearly focused photographs** of trophy front, right side, and left side of horns or antlers. For skull, include photographs of front, top, right side, and left side. Digital photographs are acceptable, but must be high quality. 3"x4" or 4"x6" photos are preferred, either singly or all on a single 8.5"x11" sheet of glossy photo-grade paper.
- ☐ **Entry Affidavit or Materials Release Form.** The hunter's signature on the Entry Affidavit must be witnessed by either an Official Measurer, notary public, or Commissioner of Oaths (Canada), or it is not acceptable. No Entry Affidavit is required for trophies of unknown origin, picked up, hunter deceased, purchased at flea markets, etc. However, a Materials Release Form, signed by the owner, is required for these trophies. The Materials Release Form is on the back of the score chart.
- ☐ **Hunter, Guide, and Hunt Information form or Narrative of the history of the trophy.** A completed Hunter, Guide, and Hunt Information form is required even if the services of a guide were not employed on the hunt. The hunter simply needs to complete the parts of the HGH form that apply to his particular trophy.
- ☐ **Copy of hunting license/big-game tag/salvage permit used to take or possess the trophy.** In lieu of a copy of the original license/tag, B&C will accept a statement from an appropriate Game and Fish Department official certifying that a license (and any required tags) was possessed by the hunter at the time the trophy was taken. If the Game and Fish Department no longer has records at its disposal to verify a license purchase, a written statement, on official letterhead, from game and fish personnel stating the fact that the license information is no longer available is acceptable. If a salvage or possession permit is required in the particular state for picked up trophies, submit a copy of that document or a letter stating it was issued if it is no longer available.
- ☐ A narrative is required for trophies of unknown origin, picked up, hunter deceased, purchased at flea markets, etc. The narrative must include pertinent information about how the trophy was acquired, condition of trophy (if found), dates, bills of sale, etc. If a boundary is involved with the category (e.g. Columbia blacktail deer), the exact location where it came from must be included.