

# BOONE AND CROCKETT CLUB®

OFFICIAL SCORING SYSTEM FOR NORTH AMERICAN BIG GAME TROPHIES

## NON-TYPICAL WHITETAIL AND COUES' DEER

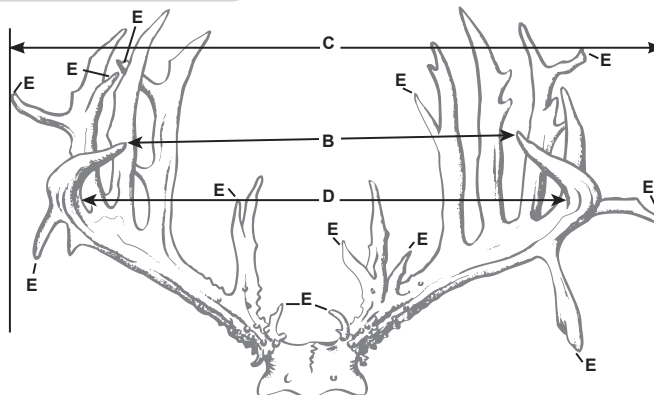
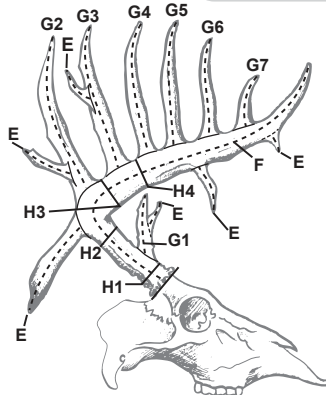
(CHECK ONE):

- ☐ whitetail  
☐ Coues'

MINIMUM SCORES AWARDS ALL-TIME		
185	195	
105	120	



Detail of Point  
Measurement



### ABNORMAL POINTS

Right Antler Left Antler

### SEE OTHER SIDE FOR SCORING INSTRUCTIONS

BELOW DATA (A, B, & C) DO NOT CALCULATE IN THE FINAL SCORE BUT ARE REQUIRED

A. No. Points on Right Antler		No. Points on Left Antler		
B. Tip-to-Tip Spread		C. Greatest Spread		SUBTOTALS
				E. TOTAL

D. Inside Spread of Main Beams		SPREAD CREDIT (May Equal But Not Exceed Longer MAIN BEAM)		Column 1 Right Antler	Column 2 Left Antler	Column 3 Difference
F. Length of Main Beam						
G-1. Length of First Point						
G-2. Length of Second Point						
G-3. Length of Third Point						
G-4. Length of Fourth Point						
G-5. Length of Fifth Point						
G-6. Length of Sixth Point, If Present						
G-7. Length of Seventh Point, If Present						
H-1. Circumference at Smallest Place Between Burr and First Point						
H-2. Circumference at Smallest Place Between First and Second Points						
H-3. Circumference at Smallest Place Between Second and Third Points						
H-4. Circumference at Smallest Place Between Third and Fourth Points						
TOTALS						

ADD TOGETHER:	Spread Credit		Exact Locality Where Killed:*		County:	State/Prov:
	Column 1		Hunter (Legal Name):		Date Killed:	
	Column 2		Trophy Owner (Legal Name):		Telephone #:	
	Subtotal		Trophy Owner's Address:			
SUBTRACT:	Column 3		Trophy Owner's Email:		Guide's Name:	
	Subtotal		Remarks (Mention Any Abnormalities or Unique Qualities):			
	Add Line E. Total					
FINAL SCORE			*Geographic location (lake, mountain, river, etc.) required for trophies taken in Canada and Alaska.			
			Boone and Crockett Club® Official Measurer I.D. Number			

Mail To: Boone and Crockett Club ■ 250 Station Drive, Missoula, MT 59801 ■ (406) 542-1888 ■ [www.booneandcrockettclub.com](http://www.booneandcrockettclub.com)

No part of this scoring system may be altered in any way. No part of this score chart may be altered or copied without express written permission from the Boone and Crockett Club. A score chart is not authenticated until signed and dated by a certified Boone and Crockett Club Official Measurer. No scores are official Boone and Crockett scores until verified and the trophy is accepted by the Boone and Crockett Club. All trophy entries into the Boone and Crockett Club's Awards Programs are subject to verification.

COPYRIGHT © 2024 BY BOONE AND CROCKETT CLUB®

2/24-1K

I, \_\_\_\_\_, certify that I have measured this trophy on \_\_\_\_\_  
PRINT NAME MM/DD/YYYY

at \_\_\_\_\_  
STREET ADDRESS CITY STATE/PROVINCE

and that these measurements and data are, to the best of my knowledge and belief, made in accordance with the instructions given.

Witness: \_\_\_\_\_ Signature: \_\_\_\_\_ B&C I.D. Number 

--	--	--	--

  
B&C OFFICIAL MEASURER

#### BOONE AND CROCKETT CLUB® INSTRUCTIONS FOR MEASURING NON-TYPICAL WHITETAIL AND COUES' DEER

All measurements must be made with a 1/4-inch wide flexible steel tape to the nearest one-eighth of an inch. (Note: A flexible steel cable can be used to measure points and main beams only.) Enter fractional figures in eighths, without reduction. Official measurements cannot be taken until the antlers have air dried at a habitable room temperature for at least 60 days after the animal was killed. The 60-day drying period for a trophy that has been frozen or boiled begins the day it is removed from the freezer, boiling pot, or submersion in any liquid.

**A. Number of Points on Each Antler:** To be counted a point, the projection must be at least one inch long, with the length exceeding width at one inch or more of length. All points are measured from tip of point to nearest edge of beam as illustrated. Beam tip is counted as a point but not measured as a point. **Point totals do not add into the final score.**

**B. Tip-to-Tip Spread** is measured between tips of main beams. **Tip-to-tip spread does not add into the final score.**

**C. Greatest Spread** is measured between perpendiculars at a right angle to the center line of the skull at widest part, whether across main beams or points. **Greatest spread does not add into the final score.**

**D. Inside Spread of Main Beams** is measured at a right angle to the center line of the skull at widest point between main beams. Enter this measurement again as the Spread Credit if it is less than or equal to the length of the longer main beam; if greater, enter longer main beam length for Spread Credit.

**E. Total of Lengths of all Abnormal Points:** Abnormal Points are those non-typical in location (such as points originating from a point or from bottom or sides of main beam) or extra points beyond the normal pattern of points. Measure in usual manner and enter in appropriate blanks.

**F. Length of Main Beam** is measured from the center of the lowest outside edge of burr over the outer side to the most distant point of the main beam. The point of beginning is that point on the burr where the center line along the outer side of the beam intersects the burr, then following generally the line of the illustration.

**G-1-2-3-4-5-6-7. Length of Normal Points:** Normal points project from the top of the main beam. They are measured from nearest edge of main beam over outer curve to tip. Lay the tape along the outer curve of the beam so that the top edge of the tape coincides with the top edge of the beam on both sides of the point to determine the baseline for point measurement. Record point lengths in appropriate blanks.

**H-1-2-3-4. Circumferences** are taken as detailed in illustration for each measurement. If brow point is missing, take H-1 and H-2 at smallest place between burr and G-2. If G-4 is missing, take H-4 halfway between G-3 and tip of main beam.

#### BOONE AND CROCKETT CLUB® MATERIALS RELEASE FORM FOR ALL NON-HUNTER-TAKEN TROPHIES

I certify by my signature that the information I have provided on this form is accurate and correct. I also understand that all my entry materials, including photographs, as well as any additional photographs taken by Boone and Crockett (our representatives or agents) during Awards Programs or Judges Panels, or likenesses rendered from these photographs become the property of the Boone and Crockett Club and may be used to promote the Club, and its records-keeping activities.

Date: \_\_\_\_\_ Signature of Trophy Owner: \_\_\_\_\_

### ENTRY REQUIREMENTS FOR BOONE AND CROCKETT TROPHIES

- ☐ **Current original score chart, signed and dated by the Official Measurer.**
- ☐ **\$40 Entry Fee.** The entry fee, which is nonrefundable, is payable in cash, personal check, money order, credit card, etc.,. It is waived for government fish and wildlife agencies, Official Measurers, museums, educational institutions, etc.
- ☐ **Clearly focused photographs** of trophy front, right side, and left side of horns or antlers. For skull, include photographs of front, top, right side, and left side. High resolution digital photographs are preferred, if printed please print on photo-grade paper. Please make sure the entire skull/antlers/horns is within the frame.
- ☐ **Entry Affidavit or Materials Release Form.** The hunter's signature on the Entry Affidavit must be witnessed by either an Official Measurer, notary public, or Commissioner of Oaths (Canada), or it is not acceptable. No Entry Affidavit is required for trophies of unknown origin, picked up, hunter deceased, purchased at flea markets, etc. However, a Materials Release Form, signed by the owner, is required for these trophies. The Materials Release Form is on the back of the score chart.
- ☐ **Hunter, Guide, and Hunt Information form or Narrative of the history of the trophy.** A completed Hunter, Guide, and Hunt Information form is required even if the services of a guide were not employed on the hunt. The hunter simply needs to complete the parts of the HGH form that apply to their particular trophy.
- ☐ **Copy of hunting license/big-game tag/salvage permit used to take or possess the trophy.** In lieu of a copy of the original license/tag, B&C will accept a statement from an appropriate Game and Fish Department official certifying that a license (and any required tags) was possessed by the hunter at the time the trophy was taken. If the Game and Fish Department no longer has records at its disposal to verify a license purchase, a written statement, on official letterhead, from game and fish personnel stating the fact that the license information is no longer available is acceptable. If a salvage or possession permit is required in the particular state or province for picked up trophies, submit a copy of that document or a letter stating it was issued if it is no longer available.
- ☐ A narrative is required for trophies of unknown origin, picked up, hunter deceased, purchased at flea markets, etc. The narrative must include pertinent information about how the trophy was acquired, condition of trophy (if found), dates, bills of sale, etc. If a boundary is involved with the category (e.g. Columbia blacktail deer), the exact location where it came from must be included.