

## Dallas, Texas - 22nd Awards Site

THE DALLAS MUSEUM OF NATURAL HISTORY IN DALLAS, TEXAS, HAS BEEN SELECTED AS THE SITE FOR THE BOONE AND CROCKETT CLUB'S 22ND AWARDS PROGRAM. DALLAS, WHICH WAS ALSO THE SITE FOR THE 18TH AWARDS PROGRAM IN 1983, WAS SELECTED OVER SEVERAL OTHER CONTENDERS FOR THE EVENT, INCLUDING RENO, NEVADA.

Mark your calendars for June 8-10, 1995, and plan to attend the Awards Banquet and related activities. I can assure you that you will find it to be the experience of a lifetime.

The 22nd Awards Banquet will recognize the top 100 or so trophies entered in the Club's Awards Program during 1992-1994 and will be preceded by a public display of the award-winning trophies at the Dallas Museum of Natural History. Attendees will have the unparalleled opportunity to view a collection of the finest big game animals ever taken. Reservation information and complete details of all the activities will be announced in future editions of *Fair Chase* as they are finalized.

### POLAR BEAR TROPHIES ACCEPTABLE

After a moratorium of nearly 25 years, the Club is once again accepting polar bear trophies from Northwest Territories for entry in the Club's Awards Programs. The minimum score for entering a polar bear is 27 points for either the Awards or the all-time records book.

The Records Committee recently took this action after the U.S. Fish and Wildlife Service lifted restrictions on the importation of polar bear trophies from Canada. While the procedure for importing polar bear trophies into the United States is still being finalized, it will likely be retroactive to cover trophies that have been in storage while the importation ban was in effect. Trophy owners will be required to submit a copy of their license, as well as a copy of their export permit to substantiate legality.

The Club placed a moratorium

on polar bears in the late 1960's because much of the hunting was done with the aid of airplanes. This is not the current situation for polar bears being taken in Northwest Territories.

Collins Kellogg, an official measurer from New York, hunted polar bear in Canada earlier this year and reports, "Polar bear hunting is for the young and physically fit." He further states, "All polar bear hunting is done with dogsleds."

Collins and his hunting party traversed the ice on dogsled until he cut a fresh track and took off after it. Before the mushers and Collins could get everything sorted out, the dogs caught up with the bear and attacked. Collins reports that he got a very fine specimen but several dogs were unfortunately lost in the process.

### SHED ANTLER RECORDS

As most aficionados of the Clubs scoring system know, shed antlers, or trophies with split skulls, are not acceptable for entry in the Club's Awards Programs. This is because the inside spread, which is an integral part of the final score for antlered trophies, cannot be determined with any degree of accuracy if the skull plate is split or absent.

Through our associates and official measurers we've recently been made aware of a new records keeping organization called the Shed Antler Records of North American Big Game. We don't know much about it, but it is our understanding that they have devised a scoring system for loose antlers based largely on the Boone and Crockett Club's scoring system.

I would like to point out that the Boone and Crockett Club does not have any affiliation with this organization. Further, the Club does not mind if measurers get involved with the shed antler records-keeping program, as well as with any other records-keeping organizations. Participation in such activities is a personal matter left to the discretion of individual measurers.

A potential conflict, however, recently came to our attention. It appears that this new organization requires at least some trophy owners with top scoring shed antlers to have them scored by two Boone and Crockett Club measurers to be official. The Club does not subscribe to this policy and B&C measurers are not expected or obligated in any way to score such trophies.

### TYPICAL VERSUS NON-TYPICAL

One of the most frequent questions I'm asked is, "In which category is a deer or elk listed if it scores above the minimum in both the typical and non-typical categories?" The answer is quite simple but you need to have a basic understanding of the Club's scoring system for antlered trophies.

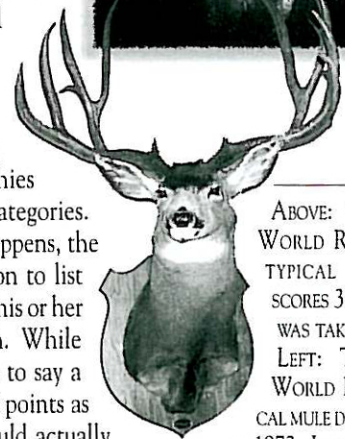
Non-typical categories exist for trophies with a significant number of abnormal points. The total lengths of such points are deducted from the score of typical trophies, but added to the score of non-typical trophies. Specimens with too many abnormal points do not normally make the typical minimums. On rare occasions, however, some trophies can score in both categories.

When this happens, the owner has the option to list it in the category of his or her choice, but not both. While it may sound better to say a whitetail scores 195 points as a non-typical, it could actually rank better in the typical category with a final score of, say for example, 185 points. Thus, while it might be best to place such trophies in the category that gives them the highest relative rank, it is still up to the trophy owner to make the final choice.



Jack Reneau

DIRECTOR  
Big Game Records



ABOVE: THE CURRENT WORLD RECORD NON-TYPICAL MULE DEER SCORES 355-2/8 POINTS WAS TAKEN IN 1926.

LEFT: THE CURRENT WORLD RECORD TYPICAL MULE DEER WAS TAKEN IN 1972. IT SCORES 226-4/8 POINTS. EVEN THOUGH IT HAS ONE ABNORMAL POINT THAT SCORES 2-5/8 INCHES, IT IS CLEAR TO SEE THE DIFFERENCE BETWEEN THE TWO CATEGORIES.