

RECENTLY ACCEPTED BIG GAME TROPHIES

The following pages list the big game trophies accepted into the Boone and Crockett Club's 26th Big Game Awards Program, 2004-2006. All entries received between January 1, 2004, and December 31, 2006, are entered in the 26th Big Game Awards Program. All of the field photos in this section are from entries that are listed in this issue and are shown in bold green text.

Listings with an * are from the 25th Big Game Awards Program. These entries did not make it on the final list for that entry period.

This is not a complete listing.

George A. Pickel is pictured below with his black bear scoring 20-12/16 points. He took this bear near Skowl Arm, Alaska, in 2003.



BEAR & COUGAR

SCORE LOCATION HUNTER DATE MEASURER

BLACK BEAR

22 14/16	Carbon Co., PA	Brian J. Coxe	2003	D. Killough
22 11/16	Chippewa Co., WI	Duane Helland	2003	K. Zimmerman
21 15/16	Vilas Co., WI	Paul A. Reed	2002	B. Tessmann
21 13/16	Lycoming Co., PA	Scott L. Cummings	2001	W. Bower*
21 12/16	Placer Co., CA	David A. Mussman	2003	J. Fischer
21 11/16	Barron Co., WI	Picked Up	2002	D. Boland
21 9/16	Washburn Co., WI	David Marker	2003	K. Zimmerman
21 8/16	Pelican Lake, MB	Tony A. Ruys	2003	S. Zirbel
21 6/16	Warren Co., PA	Shawn M. Gallagher	2003	R. Turk
21 5/16	Buckingham Co., VA	Michael D. Nixon	2003	F. Blaha*
21 5/16	Presque Isle Co., MI	Grant R. Dix	2003	C. Cogsdill
21 4/16	Juneau Co., WI	Brian J. Baukin	2003	S. Godfrey
21 2/16	Fond du Lac River, SK	Andy Carpenter	2003	D. Francais
21 1/16	Frederick Co., VA	David S. Iser	2003	C. Harrison
21	Camden Co., NC	William E. Rose	2003	T. Monschein
21	La Plata Co., CO	Picked Up	2002	B. Long
21	Sundown, MB	Mel A. Ortman	2002	R. Turman*
20 14/16	Washburn Co., WI	Melvin Kusilek	2000	S. Ashley
20 13/16	Bayfield Co., WI	Kevin Meierotto	2003	D. Boland
20 12/16	Braxton Co., WV	John A. Barker	2003	E. Richmond
20 12/16	Skowl Arm, AK	George A. Pickel	2003	R. Kent
20 11/16	Prince of Wales Island, AK	Wayne P. Fontenelle	2003	J. Cook*
20 11/16	Stanislaus Co., CA	Michael J. Battin	2000	S. Rauch
20 9/16	Belknap Co., NH	Joseph A. Santucci	2002	R. Blaisdell
20 8/16	Iron Co., WI	Jere J. Hamel	2003	L. Jass
20 8/16	Rusk Co., WI	Eric Lundmark	2000	K. Zimmerman
20 8/16	Yakima Co., WA	Jerry W. Reynolds	2003	G. Abbott
20 7/16	Sublette Co., WY	Picked Up	1987	S. Rauch*
20 6/16	Marshall Co., MN	Troy A. Edberg	2003	C. Kozitka
20 5/16	Chippewa Co., WI	Sidney Larson, Jr.	2001	K. Zimmerman
20 4/16	Canoose Stream, NB	Robert A. Eisele, Sr.	2002	D. Burke
20 4/16	Spokane Co., WA	Doug Flory	2003	L. Carey
20 4/16	Washington Co., ME	Chad A. Thompson	2003	A. Wentworth
20 3/16	Staney Creek, AK	Kyle J. Marinoff	2003	S. Zirbel
20 3/16	Wallowa Co., OR	Fred L. Hornshuh, Jr.	2002	G. Abbott
20 1/16	Bayfield Co., WI	Jeff Adank	2002	K. Zimmerman
20 1/16	Koochiching Co., MN	Joel W. Pagnac	2003	D. Rorem
20 1/16	La Plata Co., CO	Wes S. Akers	2003	B. Long
20 1/16	Washburn Co., WI	JoDee V. Mittlestadt	2003	J. Hjort
20	Fremont Co., WY	Alvin G. Grospron	2002	W. Crump
20	Peel Inlet, BC	Greg T. Nelson	2002	R. Zaiglin
20	Sheldens Bay, BC	Greg T. Nelson	2002	R. Zaiglin

GRIZZLY BEAR

24 4/16	Kechika River, BC	Frank R. Reynolds	2003	D. Milton
24 2/16	Caribou Co., ID	Picked Up	1900	L. Hlavaty*
23 13/16	Melozitna River, AK	Daniel M. Hawkins	2003	C. Brent*
23 10/16	Asikpak River, AK	Paul E. Johnson	2001	L. Griffin*

ALASKA BROWN BEAR

28 5/16	Sturgeon River, AK	David A. Ratliff	2003	C. Brent
28 5/16	Unimak Island, AK	Reed Mellor	2003	S. Bagley
27 5/16	Kodiak Island, AK	Rocky A. Hall	2003	F. Noska
27 1/16	Caribou River, AK	Tony L. Reichter	2003	C. Brent
26 11/16	Sandy River, AK	Thomas C. Merritt	1999	J. Stein*
26 9/16	Karluk River, AK	Marc A. Martel	2002	C. Brent*
26 9/16	Muklung Hills, AK	Byron Lamb	2003	T. Spraker*

COUGAR

15 5/16	Battle Creek, BC	Malcolm R. Bachand	2004	R. Petrie
15 5/16	Umatilla Co., OR	Mike L. Cornell	2003	T. Brown
15 3/16	Clark Co., ID	Cameron T. Ballard	2003	K. Fullenkamp
15 3/16	Yakima Co., WA	Michael L. McIntyre	2003	D. Morris
15 1/16	Sanders Co., MT	Terry K. Turner	2003	W. Johnson
14 12/16	Chilcotin Ranges, BC	Gary L. Bailey	2003	R. Dehart
14 11/16	Kootenai Co., ID	W. Thexton & B. Gonzales	2004	P. Gardner

NON-TYPICAL MULE DEER CONTINUED

265 5/8	Park Co., WY	John K. Corbett	1943	R. Bonander
247 6/8	Delta Co., CO	Linda L. Gaines	2003	R. Black
246	Unknown	Unknown	1993	D. Stemler*
242	Crane Valley, SK	Heath Jordison	2003	C. Fink
239 4/8	Camas Co., ID	Charles Strickland	1971	G. Abbott
235 7/8	Mesa Co., CO	James R. March	2003	A. Crum
228	Eagle Co., CO	William J. McEwen	2003	W. Alloway
220 4/8	Routt Co., CO	Joe B. Essex	1963	R. Gadberry
218 5/8	Ouray Co., CO	Sophie N. Golden	1911	B. Long
217 1/8	Garfield Co., CO	Wilcy Moore	1962	K. Witt

TYPICAL COLUMBIA BLACKTAIL

152 2/8	Tillamook Co., OR	Roy Harris	2003	G. Egbert
150 4/8	Mendocino Co., CA	Joshua D. Powell	2003	R. Elkins
145 7/8	Glenn Co., CA	Ed Moore	2003	H. Wilson
140 1/8	Mendocino Co., CA	Redhawk R. Pallesen	1997	R. Elkins
138 7/8	Mendocino Co., CA	Dennis J. Deaton	1986	D. Turner
133 3/8	Santa Clara Co., CA	Joel G. Sakamoto	2001	H. Tonkin*
131	Mendocino Co., CA	Richard M. Noonan	1992	R. Elkins

TYPICAL SITKA BLACKTAIL DEER

116 6/8	Wild Creek, AK	George R. Gonsalves	2003	D. Stemler
---------	----------------	---------------------	------	------------



WHITETAIL DEER

SCORE	LOCATION	HUNTER	DATE	MEASURER
-------	----------	--------	------	----------

TYPICAL WHITETAIL DEER

192 5/8	Stark Co., IL	Rebecca Ratay	2003	T. Walmsley
192	White Co., IN	Shaun M. Harvey	2003	J. Bogucki

ELK & MULE DEER

SCORE	LOCATION	HUNTER	DATE	MEASURER
-------	----------	--------	------	----------

TYPICAL AMERICAN ELK

410 5/8	Gila Co., AZ	Dan J. Agnew	2003	P. Dufek
399 7/8	White Pine Co., NV	Chris R. Knapp, Sr.	2003	L. Clark
383	Cascade Co., MT	Kenneth I. Farber	2003	T. Humes
381 3/8	Coconino Co., AZ	Aaron U. Jones	2003	J. Gates
379 6/8	Millard Co., UT	Victor O. Pickett	2003	R. Hall
379 4/8	King Co., WA	M. Sayers & L. Read	2003	J. Cook*
370 5/8	Millard Co., UT	Gayle Peterson	2003	D. Nielsen
369 4/8	Cameron Co., PA	Dale McElheny	2003	S. Keithley
368 6/8	Wasatch Co., UT	Leroy Hampton	2003	D. Smith*
368 2/8	Navajo Co., AZ	Jay A. Kellett	2003	J. Caid
367 5/8	Campbell Co., WY	Michael J. Halter	2003	M. Demick
366 2/8	White Pine Co., NV	Lynne D. Brown	2003	G. Hernandez
365 6/8	Missoula Co., MT	Chad M. Bauer	2003	S. Rauch
364 5/8	Elk Co., PA	Edward S. Polashenski	2003	D. Killough
363 6/8	Kittitas Co., WA	Colleen M. Akerblade	2003	L. Lack

NON-TYPICAL AMERICAN ELK

430 2/8	Catron Co., NM	Chris Robb	1998	K. Leo
406 7/8	Elko Co., NV	Jeffrey K. Rahbeck	2003	G. Hernandez

ROOSEVELT'S ELK

296 3/8	Tillamook Co., OR	Dan Robeson	2003	G. Abbott
---------	-------------------	-------------	------	-----------

TYPICAL MULE DEER

198 7/8	Garfield Co., CO	A.C. Winnett	1966	K. Witt
197 5/8	Gunnison Co., CO	Daniel J. Ampietro	2003	M. Trujillo
196 7/8	Mohave Co., AZ	Glenn Koch	2003	R. Hall
196 6/8	Garfield Co., CO	Timothy P. Pedrick, Jr.	2003	G. Glasgow
196 1/8	Deschutes Co., OR	William F. McGregor, Sr.	1961	G. Abbott
195 4/8	Madison Co., MT	David W. Hunt	1964	L. Lack
195 1/8	Lemhi Co., ID	William D. Arbuckle	1969	J. Booley
193	Uintah Co., UT	Unknown	1986	R. Hall*
192 4/8	Mesa Co., CO	Cy Moore	1974	K. Witt
192 3/8	Montrose Co., CO	Billy B. Batty	2003	C. Farnsworth
191 3/8	Eagle Co., CO	David W. Long	2003	L. Clark
191 3/8	Mesa Co., CO	William H. Bagby	1958	C. Muller
191 1/8	Clear Creek Co., CO	Gregg J. Richter	2003	B. Comfort
190 3/8	Sonora, MX	Julian E. Pylant	2004	M. Pillow
189 2/8	Delta Co., CO	Timothy G. Hovatter	1974	E. Fanchin
189	Mohave Co., AZ	Stevens D. Armstrong	2003	M. Cupell
188 3/8	Delta Co., CO	William J. Madaris	1976	R. Black
187 6/8	Baker Co., OR	Craig A. Briggs	2003	G. Abbott
187 3/8	Bonneville Co., ID	Louis G. Nelson	2003	B. Penske
186 2/8	S. Saskatchewan River, SK	Morris I. Fediasch	2003	A. Holtvogt
185 2/8	La Plata Co., CO	David R. Buffalow	1984	B. Smith*
184 7/8	Coconino Co., AZ	Glenn J. Ashbrook	1970	J. Bogucki
184 2/8	Graham Co., KS	Tim E. Kline	1994	M. Steffen
184	Montezuma Co., CO	E. Scott Magness	2003	B. Long
183 6/8	Tay River, AB	Peter S. Litwinow	2003	W. Paplawski
183 1/8	Millard Co., UT	William G. Brockman	2003	R. Hall
182	Natrona Co., WY	Brent Stalkup	2003	R. Bonander*
180 4/8	Rosebud Co., MT	Kenneth R. Bailey	2003	A. Hammond
180 2/8	Granite Co., MT	Tom Harris	1965	L. Lack

NON-TYPICAL MULE DEER

273	Cassia Co., ID	Donald Porter	1964	R. Hall*
-----	----------------	---------------	------	----------

TYPICAL MULE DEER

This typical mule deer scoring 196-7/8 points was taken by Glenn Koch in 2003. The buck was taken in Mohave County, Arizona.



TYPICAL WHITETAIL DEER



ABOVE: This typical whitetail deer, scoring 164-7/8 points, was taken by Tavis D. Rogers in 2003, in Ness County, Kansas. **BELOW:** John Marzolf pictured with his typical whitetail deer scoring 173 points. John took this buck in Barron County, Wisconsin, in 2003.



TYPICAL WHITETAIL DEER CONTINUED

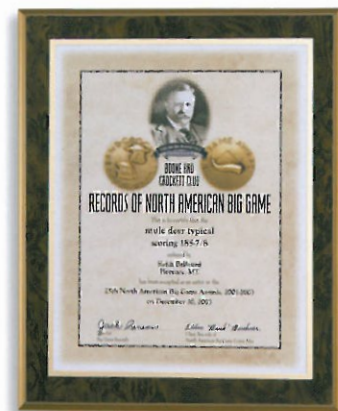
186 7/8	Lee Co., IA	Dan C. Enger	2003	R. Tebbs
185	Wayne Co., IA	Picked Up	2000	D. Nance
183 4/8	Fulton Co., IL	Justin Foglesong	2003	T. Walmsley
183 3/8	Bureau Co., IL	Paul Moon	2003	T. Walmsley
183 1/8	Henderson Co., KY	John Rutledge	2003	W. Cooper
183	Russell Co., KY	Ricky D. Roy	2003	W. Cooper
182 4/8	Jersey Co., IL	Mike Ferguson	2003	D. Bathke
182 2/8	Carlisle Co., KY	Chuck Edrington	2003	C. Wilkins
181 6/8	Hillsborough Co., NH	Chuck Orleans	2003	R. Blaisdell
181 1/8	Brown Co., OH	Michael R. Olthaus	2003	G. Trent
181	Anderson Co., KS	Michael A. Irvin	2003	J. Braithwait
180 6/8	Chippewa Co., WI	Robert D. Ressemann	2003	J. Hjort
180 1/8	Butler Co., KY	Weldon DeWeese	2003	W. Cooper
180	Clayton Co., IA	Steven L. Lange	2003	D. Boland
179 1/8	Dunn Co., ND	John E. Bang	2003	D. Eider
178 6/8	St. Louis Co., MO	Jim W. Winter	2003	D. Roper
178 4/8	Jackson Co., MI	Paul L. Calvert	2003	J. Knevel
178 2/8	Porcupine Plain, SK	Donald V. Markese	2003	C. Kuenstner
178	Lafayette Co., AR	Picked Up	1972	D. Boland
177 6/8	Madison Co., IA	Dan Golightly	2003	K. Freymiller
177 5/8	Marion Co., KY	Jimmy Maupin	2003	W. Cooper
177 3/8	Warren Co., IA	Charles W. Guhl	2003	K. Freymiller
177 2/8	Hopkins Co., KY	Matthew E. Jones	2003	W. Cooper
177 1/8	Ohio Co., KY	Ernie D. Roach	2003	W. Cooper
177 1/8	Sauk Co., WI	Kevin G. Alt	2003	A. Crum
177	Lewis Co., KY	Aaron R. Kegley	2003	W. Cooper
176 7/8	Brooks Co., TX	Michael L. Owen	2003	J. Tkac
176 7/8	Schuyler Co., IL	Rob Bartlett	2003	T. Grover
176 3/8	McPherson Co., KS	Joey Beach	2003	S. Johns
176 2/8	Comanche Co., KS	Thomas E. Baine	2003	W. Walters
176 2/8	Essex Co., MA	Picked Up	2003	R. Blaisdell
176 2/8	Saline Co., MO	Nick Huston	2003	B. Harriman
175 6/8	Rush Co., IN	Picked Up	2001	J. Bogucki
175 5/8	Bayfield Co., WI	Jim Nieckula	2003	J. Senske
175 5/8	Athabasca River, AB	Doug E. Owens	2003	J. Owens
175 4/8	Prairie River, SK	Daryl Savage	2003	J. Kuzma
175 3/8	Butler Co., KY	John S. Meyer	2003	R. Morton
175 3/8	Door Co., WI	Adam C. LeBre	2003	S. Zirbel
175 3/8	Waterhen River, SK	Anthony W. Summitt	2003	C. Cogsdill
175 2/8	Wayne Co., IN	Robert J. Morgan	2002	P. Hawkins
175 1/8	Edmonson Co., KY	Tony Sanders	2003	W. Cooper
174 7/8	Dodge Co., NE	Kirk D. Brand	2003	R. Krueger
174 5/8	Coahuila, MX	Ignacio O'Higgins	2003	J. Stein
174 3/8	Yuma Co., CO	Picked Up	2001	L. Guldman
174	Woodford Co., KY	Michael L. Burleson	2003	N. Minch
173 7/8	Calhoun Co., SC	Oneal R. Hoffman	2003	C. Ruth
173 7/8	Delaware Co., OH	Jeff A. Daily	2003	S. Boham
173 6/8	Richland Co., WI	Greg Beighley	2003	S. Godfrey
173 5/8	St. Louis Co., MN	Leroy Dobson	2003	R. Dehart
173 5/8	Washington Co., IL	Allen G. Albers	2003	J. Garver
173 3/8	Butler Co., KS	Cris Elinski	2003	D. Rogers
173 3/8	Hancock Co., GA	Keith Thompson	2003	R. Marchinton
173	Barron Co., WI	John Marzolf	2003	D. Boland
172 6/8	Callaway Co., MO	Brian M. Hughes	2002	D. Hollingsworth
172 5/8	Last Mountain Lake, SK	Jeff G. Brandt	2003	J. Lorenz
172 5/8	Washington Co., IA	Bradley D. Balcar	2003	B. Carroll
172 4/8	Maverick Co., TX	Joe B. Richter	2003	J. Stein
172 2/8	Linn Co., MO	Robert C. Head	2002	J. Ream
172 2/8	Maverick Co., TX	John A. Cardwell	2003	H. Gore
172 1/8	Duval Co., TX	Michael E. Murray	2003	M. Pillow
172	Poinsett Co., AR	James G. McGwier	2003	D. Doughty
172	Prince George's Co., MD	James Printz	2003	S. Keithley
171 7/8	Monroe Co., MI	Michael P. Kiley	2003	J. Knevel
171 7/8	Morrill Co., NE	Dennis Highby	2003	O. Angeloz
171 6/8	Cass Co., MO	Cilby L. Rogers	2003	T. Walmsley
171 6/8	Maverick Co., TX	William A. Jordan, Jr.	2003	J. Stein
171 6/8	Monroe Co., OH	Terry L. Bartrug	2000	B. Todd*
171 6/8	Oakland Co., MI	Gary A. Libkuman	2003	C. Cogsdill
171 6/8	Portage Co., OH	Michael R. Bedillion	2003	M. Kaufmann
171 6/8	Washington Co., OH	Thomas C. Farley	2003	C. Bowers
171 5/8	Shannon Co., MO	Picked Up	2000	D. Nance
171 4/8	Bredenburg, SK	Chris Evans	2003	R. Soyka

TYPICAL WHITETAIL DEER CONTINUED

171 4/8	Wright Co., MO	D.E. Smith	2003	D. Vanderhoef
171 3/8	Adams Co., OH	John F. Hildebrand	2000	T. Schlater
171 3/8	Jefferson Co., AR	A.E. Crossett, Sr. & E.R. Simmons	1960	D. Boland
171 3/8	Miami Co., IN	Bob A. Benzing	2003	J. Bogucki
171 3/8	Scott Co., IL	Cuyler S. Coleman	2003	T. Walmsley
171 3/8	Webb Co., TX	Tyler Russell	2003	H. Saye
171 2/8	Graham Co., KS	David C. Newton II	1999	C. Brent
171 2/8	Jackfish Lake, SK	William J. Sabatose	2003	B. Seidle
171 2/8	Muriel Lake, AB	Jesse Russell (Rusty) Flowers, Jr.	2003	S. Priest
171	Clay Co., IN	Daniel J. Corsaro	2003	P. Hawkins
170 7/8	Trumbull Co., OH	Brady A. Riemenschneider	2003	R. Pepper
170 5/8	Dubuque Co., IA	Michael E. Culbertson	2003	P. Farni
170 4/8	Pennington Co., SD	Tom L. Kruger	2003	M. McKenna
170 3/8	Benton Co., MO	Gary E. Brandes	2003	T. Walmsley
170 3/8	Hancock Co., GA	Gary McMahan	2003	K. Kammermeyer
170 3/8	Lawrence Co., IN	Picked Up	2002	R. Myers
170 3/8	Oliver Co., ND	Mark A. Ogden	2003	D. Eider
170 2/8	Dunn Co., WI	Les Kuesel	2003	J. Senske
170 2/8	Garland Co., AR	Troy Graves	2003	D. Boland
170 2/8	Jackson Co., IA	John E. Banowitz	2003	P. Farni
170 2/8	Maverick Co., TX	Rex Dacus	2003	J. Stein
170 1/8	Cumberland Co., ME	Thomas E. Dekutoski, Jr.	2003	J. Arsenault
170	Nemaha Co., NE	Shawna A. Bennett	2003	R. Mort
170	Waupaca Co., WI	Richard A. Hedtke	2003	D. Goers
169 4/8	Vermilion Co., IL	Ronald Huls	2003	D. Bathke
168 6/8	Fleming Co., KY	Austin N. Ball	2003	D. Yancy
168 3/8	Adams Co., OH	Jeff R. Osborne	2003	G. Bauer
167 6/8	Carter Co., MO	Linda J. Taylor	2003	D. Roper
167 2/8	Jersey Co., IL	Antonio E. Malone	2003	J. Chelsvig
167 1/8	Coos Co., NH	Gerard J. Perreault	2003	R. Boucher
167	Allegan Co., MI	Kevin R. Leith	2003	C. Bowers
167	Buffalo Co., WI	Justin W. Poehnel	2003	L. Jass
167	Christian Co., IL	Luigi Belcastro	2003	R. Kent
167	Jackson Co., IA	Marvin Good	2003	L. Briney
166 5/8	Adams Co., IL	Ray Madison	1999	T. Walmsley
166 2/8	Knox Co., IN	Sean McCarty	2000	M. Verble
166 2/8	Waupaca Co., WI	Russell E. Olson	1900	S. Fish
166 1/8	Hamlin Co., SD	Bohn L. Peterson	1967	W. Jackson
166 1/8	Van Buren Co., IA	Michael S. Mahurin	2003	D. Roper
166	Turtle Lake, SK	Walter S. McDonald	2003	J. Tkac
166	Winona Co., MN	Brendan P. Christenson	2003	K. Fredrickson
165 4/8	Buffalo Co., WI	Mike Kilness	2003	K. Zimmerman
164 7/8	Ness Co., KS	Tavis D. Rogers	2003	W. Alloway
164 5/8	Harrison Co., IA	M. Scott Ghan	2003	L. Guldman
164 5/8	Cold Lake, SK	Robert D. Riether	2003	D. Killough
164 4/8	Hart Co., KY	Reggie McCubbin	2003	W. Cooper
164 4/8	Weyakwin Lake, SK	Andy Milam	2003	J. Stein

New Recognition Plaque Now Available for Trophy Owners -- Official Color Certificate Plaque

This striking full-color plaque is surrounded by burl wood laminate with gold foil bevels and accents and measures 11 by 13.5 inches. This plaque includes the trophy category, score, Awards Period, date your trophy was accepted along with the trophy owner's name and date of acceptance.



**Call toll-free to Order Today!
(888)840-4868**

These plaques are available for \$49.95 plus \$7.95 for shipping and handling. Allow 4 to 6 weeks for delivery. The Boone and Crockett Awards Color Certificate Plaques, which are optional, are available to those with a trophy accepted in the Club's Awards Program.

Have the full name of the trophy owner, as well as the category, score of the trophy, and the entry period in which it was accepted ready when you place your order.

163 1/8	Waupaca Co., WI	Rosemary Bazile	2003	D. Goers
163 1/8	Worcester Co., MA	G. Robert Eden	2002	L. Desmarais
162 7/8	Chippewa Co., WI	Delbert H. Helland	2003	K. Zimmerman
162 4/8	Mt. Yamaska, QC	Andre Beaudry	2000	R. Boucher
162 2/8	Brookings Co., SD	Todd Goodfellow	2003	A. Oswald
162	Webster Co., KY	Larry E. Daub	2003	D. Belwood
161 6/8	Coshocton Co., OH	Daniel J. Tomon	2003	E. Robinson
161 6/8	Macon Co., MO	Jeffrey J. Roloff	2003	D. Goers
161 5/8	Graves Co., KY	John Oldham	2003	W. Cooper
161 4/8	Marathon Co., WI	Brad Guralski	2003	D. Goers
161 3/8	Adams Co., IL	Ray Madison	1993	J. Detjen
161 3/8	Brown Co., IL	Greg C. Flynn	2003	T. Grover
161 2/8	Marshall Co., IN	Cody W. Leed	2003	J. Bogucki
161 2/8	Noble Co., IN	Frank A. Kimmell	2003	J. Bogucki
161	McLean Co., IL	Steve Musselman	2003	B. Hulst
160 7/8	Turner Co., GA	Wayne Barber	2003	W. Cooper
160 5/8	Chisago Co., MN	Picked Up	2000	K. Fredrickson
160 4/8	Greene Co., IL	Thaddeus J. Lauer	2003	G. Wagner
160 3/8	Anoka Co., MN	Picked Up	2003	K. Fredrickson
160 3/8	Callaway Co., MO	Mario Kriete	2003	L. Redel
160 3/8	Hartford Co., CT	Steven L. Glode	2003	C. Lieser
160 2/8	Cooper Co., MO	Trevor G. Cunningham	2003	L. Smith
160 2/8	Floyd Co., IN	Dennis Mayfield	2003	R. Flynn
160 1/8	Pierce Co., WI	Cory Haglund	2003	S. Ashley
160 1/8	Trempealeau Co., WI	Cory M. Hestekin	2003	L. Jass
160 1/8	Trempealeau Co., WI	Nick Fredixon	2003	K. Zimmerman
160 1/8	Union Co., IA	Mickey W. Hellickson	2003	D. Draeger
160	Rusk Co., WI	Justin Sather	2003	K. Zimmerman

INSIDE THE NUMBERS

ON-LINE TROPHY DATABASE NOW AVAILABLE FROM B&C

Trophy Search gives you complete Internet access to every trophy entered and accepted into the Club's Big Game Awards Program. Just \$40 a year!

Visit www.booneandcrockettclub.com for details.

Search By Category

Search By Hunter

Search For State Rank

Search By County Or Location

164 3/8	Hamilton Co., KS	William J. Ciccone	2003	B. Davies
164 3/8	Monroe Co., WI	Richard L. Guy	2003	L. Jass
164 2/8	Tom Green Co., TX	Byron L. Hendrix	2003	K. Witt
164	Cass Co., MN	Ethan R. Rudbeck	2003	R. Berggren
164	Rockingham Co., NC	Douglas R. Jones, Sr.	2003	M. DeAngury
163 6/8	Wayne Co., IA	Andy C. Decker	2003	D. Ream
163 6/8	Whiteside Co., IL	Shawn C. Ryan	2002	L. Jass
163 3/8	Crawford Co., WI	Jon A. Mageland	2003	L. Jass
163 3/8	Switzerland Co., IN	John A. Mays	2002	J. Bogucki
163 2/8	Williamson Co., IL	William R. Abernathy	1996	A. Woolf
163 1/8	Knox Co., MO	Randy G. Craig	2003	D. Ream

NON-TYPICAL WHITETAIL DEER

266 4/8	Mason Co., IL	David H. Jones	2003	T. Walmsley
253 1/8	Buchanan Co., IA	Brian Andrews	2003	P. Farni
245	Washington Co., KS	John A. Payne	2003	D. Jones
234 7/8	Jersey Co., IL	Chad Goetten	2003	M. Kistler
229 2/8	Crawford Co., KS	Dennis D. Jameson	2003	T. Mills
224 7/8	Buffalo Co., WI	Paul Hofer	2003	C. Pierce
223	Lancaster Co., NE	Jeffrey A. Moody	2003	S. Woitaszewski
222 3/8	Linn Co., IA	Travis R. Hanf	2003	L. Briney

WHITETAIL AND CARIBOU



ABOVE: This non-typical whitetail deer was taken in Jersey County, Illinois, by Chad Goetten. The buck, taken during the 2003 season, scores 234-7/8 points. **BELOW:** Larry D. Hancock is pictured here with his barren ground caribou scoring 388 points. Larry took this bull in 2003 near the Bonnet Plume River in Yukon Territory.



NON-TYPICAL WHITETAIL DEER CONTINUED

219 6/8	Adams Co., IL	Eric Peters	2003	T. Walmsley
216 6/8	Morgan Co., IL	Dustin Molohon	2003	T. Grover
216 3/8	Waukesha Co., WI	David W. Klermund	2003	B. Hults
212 7/8	Carroll Co., MO	John L. Crose	2002	E. Buckner*
212 5/8	Noble Co., IN	Lyman Holbrook	2003	J. Bogucki
211 2/8	Allamakee Co., IA	Jason J. Johnson	2003	L. Miller
210 5/8	Dawson Creek, BC	Kenn F. Chysyk	1999	K. Kultgen*
209 2/8	Swift Current, SK	Howie F. Ellis	2003	C. Veasey
208 5/8	Warren Co., IA	Randy Holland	2003	D. O'Brien
205 1/8	Montague Co., TX	Don E. Haley	2003	J. Gunnels
204 7/8	Warren Co., MO	Gary Eschbach	2003	D. Hollingsworth
204 4/8	Rush Co., IN	Picked Up	2003	J. Bogucki
204 3/8	Adams Co., OH	Stephen M. Rohling	2002	J. Phillips
204 3/8	Roseau Co., MN	Patrick F. Lorenson	2003	J. Zins
204 2/8	Chippewa Co., WI	Unknown	1960	D. Boland
204 1/8	Butler Co., OH	Heather M. Martin	2003	R. Perrine
203	Clearwater Co., MN	Darin K. Beckstrand	2003	R. Dehart
202 5/8	Beaver River, SK	Aivars O. Berkis	2003	D. Killough
202 5/8	Randolph Co., IL	Bill Murray	2003	D. O'Brien
202 3/8	Lawrence Co., IL	Troy Dickens	2003	W. Cooper
202	Jackson Co., MO	Sterling D. Mathis	2003	D. Vanderhoef
201 6/8	Barber Co., KS	Justin K. Bridges	2001	R. Hale
201 6/8	Clayton Co., IA	John A. Barnes	2003	L. Briney
201 4/8	Jefferson Co., PA	James D. Rowles	2000	P. Klein*
201 4/8	Macon Co., MO	Tanner A. Brundage	2003	L. Redel
201 1/8	Washington Co., WI	Duane D. Radder	2003	S. Ashley
199 6/8	Carroll Co., OH	Eddie E. Mayle	2003	R. Stephen
199 6/8	Todd Co., MN	Richard E. Baum	2003	K. Fredrickson
199 5/8	Lee Co., IA	Dan C. Enger	2003	R. Tebbs
199 3/8	Harrison Co., IN	Joseph C. Kuerzi, Jr.	2003	M. Verble
199 2/8	Graves Co., KY	Ike Murphy	2003	W. Cooper
199 1/8	Shelby Co., IL	Sam Perry	2003	T. Walmsley
198 2/8	Marion Co., IA	Ryan D. Buffington	2003	D. Pfeiffer
198	Dubois Co., IN	Scott J. Fromme	2000	M. Verble
197 2/8	Noxubee Co., MS	Edward A. Halfacre	1998	R. Spencer*
197	Kent Co., DE	Robert P. Reeves, Jr.	2004	W. Jones
196 7/8	Morrow Co., OH	Clyde E. Robinson	2003	W. Ogden
196 7/8	Pratt Co., KS	Kelley G. Murphy	2001	D. Rogers
196 6/8	Okfuskee Co., OK	David W. Day	2003	R. Hoar
196 4/8	Waushara Co., WI	Scott Reis	2003	P. Barwick
196 1/8	Clay Co., IL	Craig A. Petersen	2003	T. Grover
196	Koochiching Co., MN	Picked Up	2002	D. Rorem
195 6/8	Monroe Co., IN	Dave R. Holmes	2003	M. Verble
195 2/8	Dutchess Co., NY	Scott W. Soterion	2003	L. Marston
195	Lewis Co., KY	Ray McMillan	2003	J. Phillips
194 6/8	Putnam Co., MO	Emily A. McQueen	2003	J. Ream
193 2/8	Crawford Co., IL	Jackson Jenkins	2003	B. Hults
192 7/8	Buck Lake, AB	Charles T. Fleenor	2003	W. Knox
192 1/8	Flotten Lake, SK	Dennis Seamanik	2003	M. DeAngury
191 5/8	Valley Co., NE	Shane M. Arduser	2003	W. Vodehnal
191 1/8	Iowa Co., WI	Jim A. Conner	2003	L. Jass
190 7/8	Jackson Co., MI	Ryan M. Mains	2003	J. Knevel
189 7/8	Clark Co., IL	Michael G. Nuxoll	2002	D. O'Brien
187 7/8	Wells Co., IN	Zane Gearheart	2003	J. Bronnenberg
186 6/8	McDonough Co., IL	Jack Laverdiere	2003	T. Grover
186 4/8	Montgomery Co., IL	Brett Goldsmith	2003	M. Kistler
185 7/8	Crawford Co., WI	Aaron J. Richter	2003	C. Gallup
185 4/8	St. Louis Co., MN	Olaf A. Ness	1966	E. Alltiere
185 2/8	Lyon Co., KS	Mark E. DeWitt	2003	L. Fox
185 1/8	Oconto Co., WI	Dawn M. Janousky	2003	S. Zirbel
185	Knox Co., IL	Gary Sampson	2003	T. Grover

TYPICAL COUES' WHITETAIL

113	Sonora, MX	James A. Reynolds	2003	K. Kelso
112	Santa Cruz Co., AZ	Larry J. Osborne	2003	R. Stonoff
111 7/8	Pima Co., AZ	Gabriel Ruiz	2003	E. Buckner
111 6/8	Sonora, MX	Picked Up	1987	E. Buckner

NON-TYPICAL COUES' WHITETAIL

134 1/8	Sonora, MX	Picked Up	2000	E. Buckner
124 2/8	Gila Co., AZ	Denny L. Hunsaker	1997	R. Stayner*

PRONGHORN AND SHEEP



ABOVE: This pronghorn was taken near Manyberries, Alberta, by Fred J. Streleoff. The buck scores 88-4/8 points and was taken in 2003. **** BELOW:** Scott A. Limmer is pictured here with his Stone's sheep scoring 165-5/8 points. Scott took this ram in 2003 near Muncho Lake in British Columbia.

**This trophy was listed in the Summer 2004 issue of *Fair Chase*.



MOOSE & CARIBOU

SCORE LOCATION HUNTER DATE MEASURER

CANADA MOOSE

202 2/8	Stikine River, BC	David S. Marek	1998	R. Berreth
200 3/8	Warren Lake, ON	Gary D. Benson	2003	C. Kozitka
199 5/8	Sawn Lake, AB	Dean V. Manz	2003	A. England*
194 1/8	Dry Lake, BC	Carean Goss	2003	M. Barrett
191 2/8	Kelsall River, BC	Robert T. Henson	2003	P. Ostrum
191	Makomesut Lake, ON	Brent J. Larson	2003	D. Chambers
188 4/8	Coos Co., NH	Brent D. Bouchard	2001	J. Glidden*
185	Sydney Lake, ON	Dale E. Roethemeyer	1993	J. Mraz

ALASKA-YUKON MOOSE

229	Old Womens Mountain, AK	Ralph L. Ivanoff	2003	C. Brent*
225 5/8	MacMillan River, YT	Kevin Cresci	2003	R. Turman
224 1/8	Red Paint Creek, AK	Colin Onaka	2003	G. Anderson
218 3/8	Nonvianuk River, AK	Richard J. Jacob	2001	F. King

WYOMING (SHIRAS) MOOSE

199 6/8	Glacier Co., MT	Polite H. Pepion	2003	H. Yeager
168 2/8	Spokane Co., WA	David W. Bridges	2003	R. Spaulding
157 4/8	Lincoln Co., WY	George Deavor	1988	D. Stemler
144	Jefferson Co., ID	Val Hymas	1999	L. Lack*
143 4/8	Lincoln Co., WY	Margaret Deavor	1980	D. Stemler
140 2/8	Wasatch Co., UT	Keldon A. Paxman	2003	D. Nielsen

MOUNTAIN CARIBOU

409 3/8	Mackenzie Mts., NT	Joseph C. Arakas	2002	R. Tipton
---------	--------------------	------------------	------	-----------

BARREN GROUND CARIBOU

427 7/8	Adak Island, AK	Brian P. Reynolds	2003	G. Abbott
388	Bonnet Plume River, YT	Larry D. Hancock	2003	B. Davies
378 4/8	Cathedral Valley, AK	Thomas V. Arnim	2003	J. Stein
377 3/8	Mulchatna River, AK	Chuck Hendrix	1995	L. Lack

CENTRAL CANADA BARREN GROUND CARIBOU

372 7/8	Rendez-vous Lake, NT	Charles H. Rohrer	2001	R. Lowe*
350 5/8	Obstruction Rapids, NT	Gerald E. Rightmyer	2003	R. Songin
345 4/8	Rendez-vous Lake, NT	Martin R. Riedner	2002	J. Graham

QUEBEC-LABRADOR CARIBOU

384 6/8	Lac Retty, QC	Douglas Manthey	2003	J. Senske
365 1/8	Jobert Lake, QC	Carl W. Peterson	2003	G. Berger



HORNED GAME

SCORE LOCATION HUNTER DATE MEASURER

PRONGHORN

94	Coconino Co., AZ	Patrick Brewer	2003	K. Kelso
86 2/8	Malheur Co., OR	Ethan A. Banducci	2003	T. Brown
86	Jackson Co., CO	Denis R. McClure	2003	G. Wagner
86	Milk River, AB	Keith R. Heppler	2003	L. Schlachter
85 6/8	Fremont Co., WY	John K. Metzler	2003	V. Dana
85 2/8	Jackson Co., CO	Karl E. Wondrak	2003	B. Wilkes*
84 6/8	Humboldt Co., NV	Ian O. Muceus	2003	G. Hernandez
84 6/8	Socorro Co., NM	Angie D. Hall	2003	K. Kelso*
83 2/8	Fremont Co., WY	Nathan S. Miller	2003	K. Dana
82 6/8	Albany Co., WY	Charles D. Mullins	2003	R. Boyd
82 6/8	Custer Co., MT	Steve Brett	2003	S. Rauch
82 2/8	Socorro Co., NM	Todd A. Romsa	2003	K. Kelso
82	Niobrara Co., WY	Rodney Damm	2003	R. Dehart
82	Socorro Co., NM	Craig T. Huff	2003	K. Kelso
80 6/8	Fremont Co., WY	Michael T. Berthod	2003	B. Wilkes
80 6/8	Phillips Co., MT	Tom Schumacher	2003	M. Sullivan
80 2/8	Grant Co., NM	Lanny S. Rominger	2003	V. Howard
80	Grant Co., NM	Mike Goodart	2003	V. Howard
80	Sierra Co., NM	Joe M. Keathley	2003	P. Dufek
80	Sweetwater Co., WY	Nicole L. Peterson	2003	K. Dana

MUSKOX

Michael D. Fain is pictured here with his muskox scoring 112-4/8 points. Michael took this bull in August 2003 near Ellice River in Nunavut.



BISON

121 4/8	Garfield Co., UT	R. Kendal Oldroyd	2003	S. Bagley
116 4/8	Custer Co., SD	Dan S. Muchow	2004	P. Farni
115 4/8	Custer Co., SD	Shamus M. McCarthy	2000	J. Reneau
115 4/8	Garfield Co., UT	Kelly Christiansen	2003	R. Drobnick

ROCKY MOUNTAIN GOAT

52 2/8	Adams Co., ID	Rusty P. Kirtley	2003	J. Femrite*
51 4/8	Dease Lake, BC	Kenneth G. Bergfeld	2003	P. Farni
51	Kelsall River, BC	Robert T. Henson	2003	P. Ostrum
51	Zymoetz River, BC	Chad D Ridley	2004	G. Markoski
50	Elko Co., NV	Kevin J. Hull	2003	G. Hernandez
50	Zymoetz River, BC	Doug J. Kroeker	2003	C. Zuckerman

MUSKOX

112 4/8	Ellice River, NU	Michael D. Fain	2003	J. Tkac
105	Rendez-vous Lake, NT	Don Coffman	2003	S. Rauch

BIGHORN SHEEP

197 2/8	Ewin Creek, BC	David P. Rivers	2003	L. Hill
188 5/8	Nez Perce Co., ID	Justin M. Armstrong	2003	S. Anderson
185 1/8	Lewis & Clark Co., MT	John J. McCarthy	2003	J. Rappold
182 2/8	Sanders Co., MT	Mabel A. Flanagan	2003	B. Sterling
182 1/8	Granite Co., MT	Kevin V. Burns	2003	S. Rauch

DESERT SHEEP

176 3/8	La Paz Co., AZ	Garth Carter	2003	K. Leo
174 1/8	Nye Co., NV	Brent D. Haliwell	2003	T. Humes
169 1/8	San Bernardino Co., CA	Edward V. Anderson	2003	D. Biggs
168 5/8	Clark Co., NV	Ron L. Fagg	2003	T. Humes
168 3/8	Baja Calif., MX	Randall K. Rauschmier	2004	J. Cook
168 3/8	Washington Co., UT	Shawn A. Labrum	2003	K. Leo
168	Garfield Co., UT	Lee Howard	2001	R. Hall*
165 7/8	Churchill Co., NV	Lance Lemaire	2003	G. Hernandez

DALL'S SHEEP

166 2/8	Brooks Range, AK	Vance M. Julian	2002	W. Keebler
---------	------------------	-----------------	------	------------

STONE'S SHEEP

165 5/8	Muncho Lake, BC	Scott A. Limmer	2003	D. Boland*
---------	-----------------	-----------------	------	------------

An Exclusive New Line with an Impeccable Pedigree



Nosler
Custom

Limited Edition Sporting Rifles • Ammunition • Brass

2005 Edition—Caliber .300 WSM. Serial numbers 1 through 500.
For information and ordering: www.noslercustom.com 1-800-285-3701

