

# MEASURING TEST

See How Your Scoring Knowledge Stands Up to the Test!

OFFICIAL MEASURER  
CONTINUING EDUCATION

## Question 1: Records Keeping: A Brief History

Boone and Crockett Club's scoring system does not place heavy emphasis on symmetry by penalizing those portions of the measured material that are non-symmetrical.

- a) True
- b) False

## Question 2: Records Keeping: A Brief History

Awards Program records books (e.g. *Boone and Crockett Club's 26th Big Game Awards*) are published every three years, the year following the close of each Awards Program. These books are unique from other B&C records books in that they:

- a) Include lists of only those trophies accepted since the last Awards book.
- b) Include only trophies accepted during the previous three years.
- c) Feature award winning trophies with their hunting story and photograph.
- d) List trophies that equal or exceed the lower Awards Program minimums (e.g. typical whitetail deer -160 points).
- e) All of the above.

## Question 3: Category Boundaries

Any thin-horned sheep that has any black hairs on the body is classified as a Dall's sheep, unless only the tail is black. In the case of a black tail only, the trophy is considered a Stone's sheep.

- a) True
- b) False

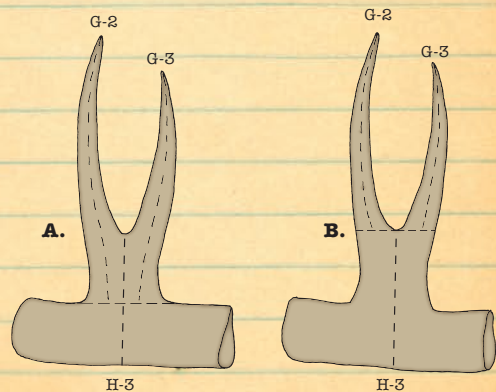
## Question 4: Category Boundaries

Boone and Crockett Club recognizes four categories of native North American sheep. Which of the following are not recognized B&C categories.

- a) Bighorn sheep.
- b) Desert sheep.
- c) California bighorn sheep.
- d) Dall's sheep.
- e) Fannin sheep.
- f) Stone's sheep.

## Question 5: Measuring Techniques

Common base points are two separate points joined together at their bases that share common point material. If the common base points (figure-8 bases) are found on both antlers where a circumference measurement is taken, the point bases are drawn as illustrated in figure (circle one):



## Questions 6: Caribou

To be counted a point in caribou, a point is any projection:

- a) You can hang a ring on.
- b) At least 4/8ths of an inch long, and longer than wide at any length of 4/8ths of an inch or more, measuring from the tip
- c) At least an inch long, and longer than wide at any length of one inch or more, measuring from the tip
- d) None of the above.

## Questions 7: Sheep

Once the proper horn lengths are established, locations of the circumference measurements are determined by dividing \_\_\_\_\_ horn measurement into quarters.

- a) The longer
- b) The shorter
- c) Each

## Statement of Ownership, Management, and Circulation

1. Publication Title: *Fair Chase* 2. Publication Number: 1077-3274 3. Filing Date: 9/29/2009 4. Issue Frequency: Quarterly 5. Number of Issues Published Annually: Four 6. Annual Subscription Price: \$35.00 7. Complete Mailing Address of Known Office of Publication: Boone and Crockett Club, 250 Station Drive, Missoula, MT 59801-2753 Contact Person: Julie T. Houk Telephone: 406/542-1888 8. Complete Mailing Address of Headquarters of Publisher: Boone and Crockett Club, 250 Station Drive, Missoula, MT 59801-2753 9. Full Names and Complete Mailing Addresses of Publisher, Editor, and Managing Editor: Publisher - Boone and Crockett Club, 250 Station Drive, Missoula, MT 59801-2753 Editor - Greg Tinsley, Boone and Crockett Club, 250 Station Drive, Missoula, MT 59801-2753 Managing Editor - Julie T. Houk, Boone and Crockett Club, 250 Station Drive, Missoula, MT 59801-2753 10. Owner: Boone and Crockett Club, 250 Station Drive, Missoula, MT 59801-2753 11. Known Bondholders, Mortgagees, and Other Security Holders: None 12. Tax Status: Has Not Changed During the Preceding 12 Months 13. Publication Title: *Fair Chase* 14. Issue Date for Circulation Data: Fall 2009 15. Extent and Nature of Circulation - Average No. Copies Each Issue During Preceding 12 Months and No. Copies of Single Issue Published Nearest to Filing Date (respectively): a. Total Number of Copies: 9,699 and 9,548 b. Paid Circulation (1) Mailed Outside-County Paid Subscriptions Stated on PS Form 3541: 6,713 and 6,213 (2) Mailed In-County Paid Subscriptions Stated on PS Form 3541: 0 and 0 (3) Paid Distribution Outside the Mails Including Counter Sales and Other Paid Distribution Outside USPS: 0 and 0 (4) Paid Distribution by Other Classes of Mail Through the USPS: 587 and 567 c. Total Paid Distribution: 7,300 and 6,780 d. Free or Nominal Rate Distribution (1) Free or Nominal Rate Outside-County Copies Included on PS Form 3541: 458 and 579 (2) Free or Nominal Rate In-County Copies Included on PS Form 3541: 0 and 0 (3) Free or Nominal Rate Copies Mailed at Other Classes Through the USPS: 1,553 and 1,583 (4) Free or Nominal Rate Distribution Outside the Mail: 112 and 114 e. Total Free or Nominal Rate Distribution: 2,123 and 2,276 f. Total Distribution: 9,423 and 9,056 g. Copies Not Distributed: 276 and 492 h. Total: 9,699 and 9,548 i. Percent Paid: 77.47% and 74.87% 16. Publication of Statement of Ownership: X If the publication is a general publication, publication of this statement is required. Will be printed in the Winter 2009 issue of this publication.